



## District 8 Code Analysis - FY18

Data extracted for Code cases opened between October 1, 2017 - Sept 30, 2018

### All Cases

Reported Complaint Type	Total	Commercial	Neighborhood	Multifamily
Land Use	401	44	345	12
Property Abatement	601	40	548	13
Structure Condition	218	43	150	25
Work Without Permit	46	5	41	-
SWS Chp 15	2	-	1	1
<b>Total</b>	<b>1,268</b>	<b>132</b>	<b>1,085</b>	<b>51</b>
<b>Total Percent of Citywide Complaints</b>	<b>3.9%</b>	<b>1.8%</b>	<b>6.0%</b>	<b>0.7%</b>

### Repeat Offenders, Short Term Rentals, and Rooming and Boarding Homes

\*Filtering cases by complaints occurring at Repeat Offender Properties (ROP), Short Term Rentals (STR), or Rooming and Boarding Homes (RBH). Austin Code categorizes them as Operating Licenses types.

Case Code	Total	Commercial	Neighborhood	Multifamily
Repeat Offender Properties	-	-	-	-
Short Term Rentals	57	2	55	-
Rooming and Boarding Homes	1	-	1	-
<b>Total</b>	<b>58</b>	<b>2</b>	<b>56</b>	<b>-</b>
<b>Total Percent of Citywide Complaints</b>	<b>0.2%</b>	<b>0.0%</b>	<b>0.3%</b>	<b>0.0%</b>

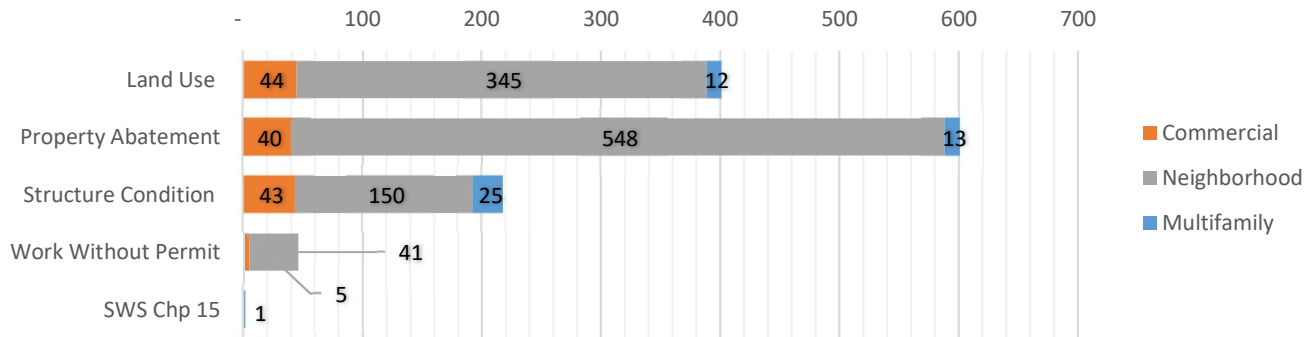
Reported Complaint Type	Total	ROP	STR	RBH
Land Use	401	-	57	1
Property Abatement	601	-	-	-
Structure Condition	218	-	-	-
Work Without Permit	46	-	-	-
SWS Chp 15	2	-	-	-
<b>Total</b>	<b>1,268</b>	<b>-</b>	<b>57</b>	<b>1</b>
<b>Total Percent of Citywide Complaints</b>	<b>3.9%</b>	<b>0.0%</b>	<b>3.4%</b>	<b>1.0%</b>

### Council District Matrix - All Cases

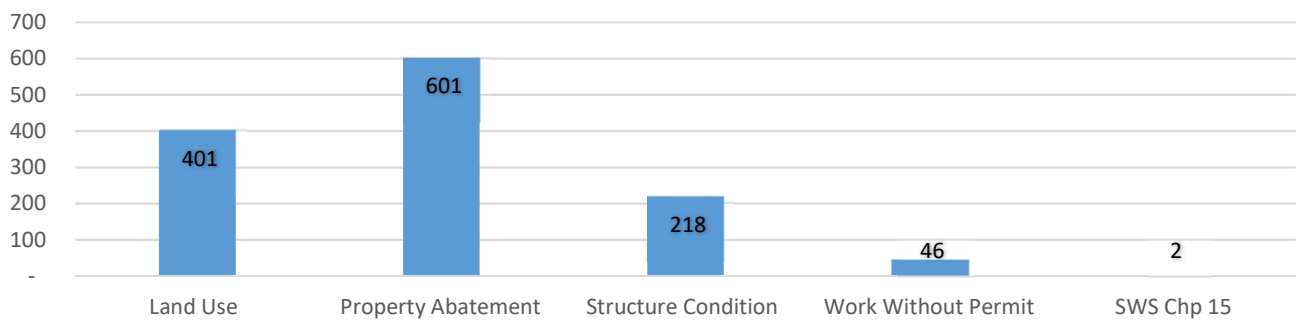
This matrix shows your Council District's percentage of total complaints in comparison with others.

Council District	% Total	% Commercial	% Neighborhood	% Multifamily
District 1	13.6%	9.2%	15.0%	14.7%
District 2	11.4%	12.6%	12.3%	7.9%
District 3	13.3%	23.4%	9.9%	11.8%
District 4	15.3%	8.4%	13.0%	28.7%
District 5	7.1%	4.2%	9.1%	4.8%
District 6	3.1%	3.1%	3.9%	1.1%
District 7	8.1%	10.0%	8.7%	4.3%
District 8	3.9%	1.8%	6.0%	0.7%
District 9	16.9%	21.4%	12.7%	23.0%
District 10	7.0%	5.9%	9.0%	2.9%

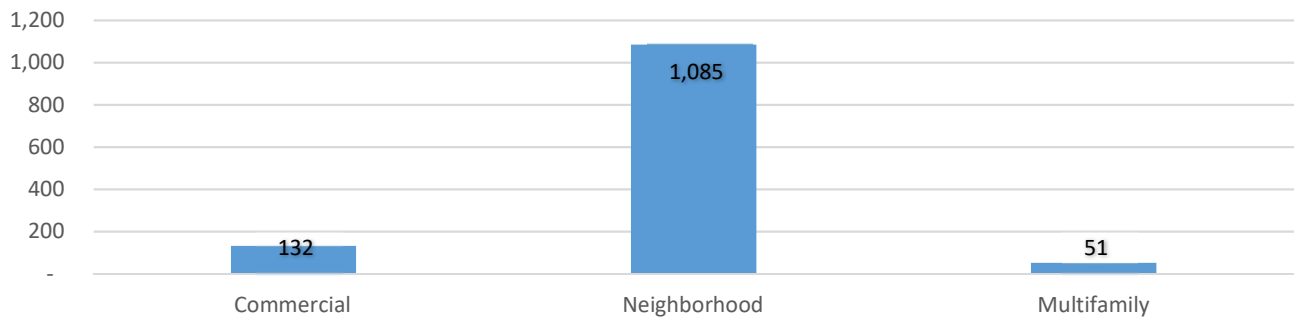
### Complaint Types by Team



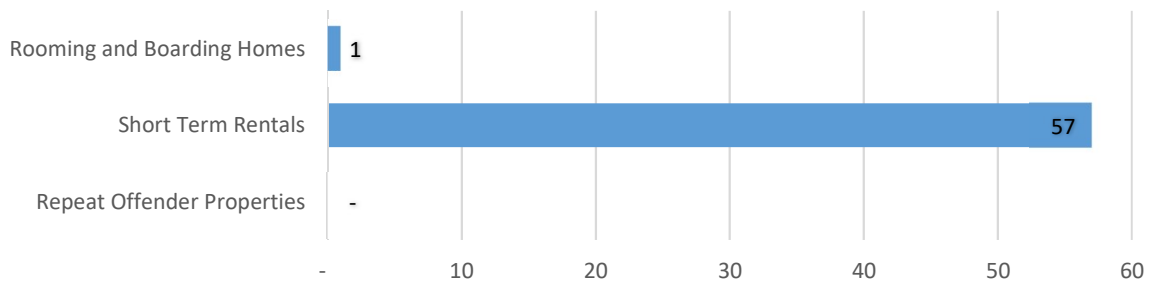
### Cases by Complaint Type



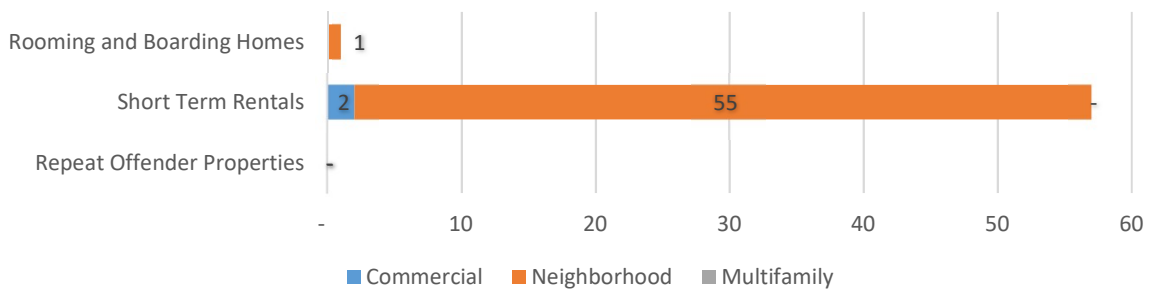
### Cases by Team



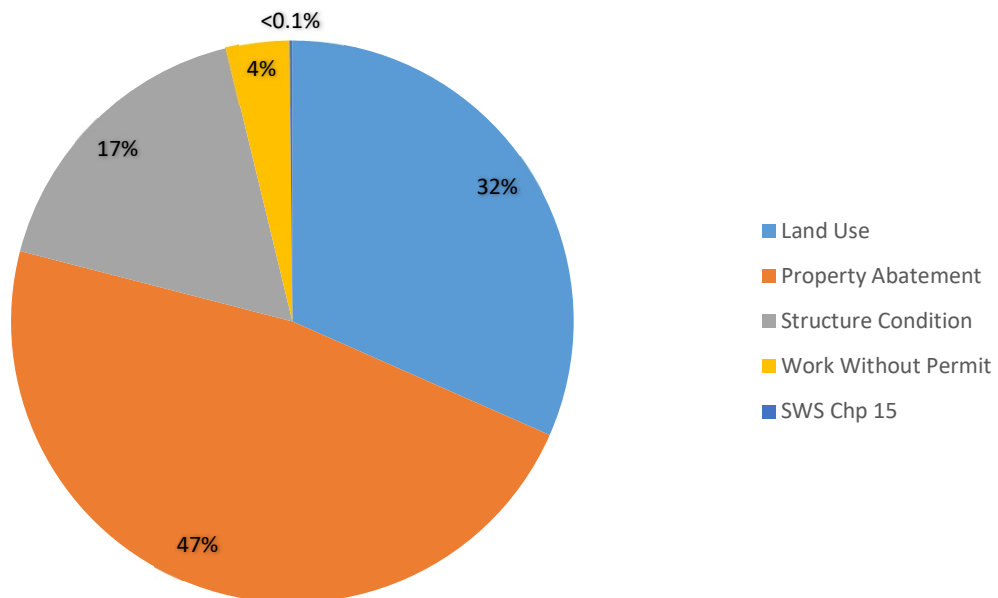
### Cases by Operating License Types



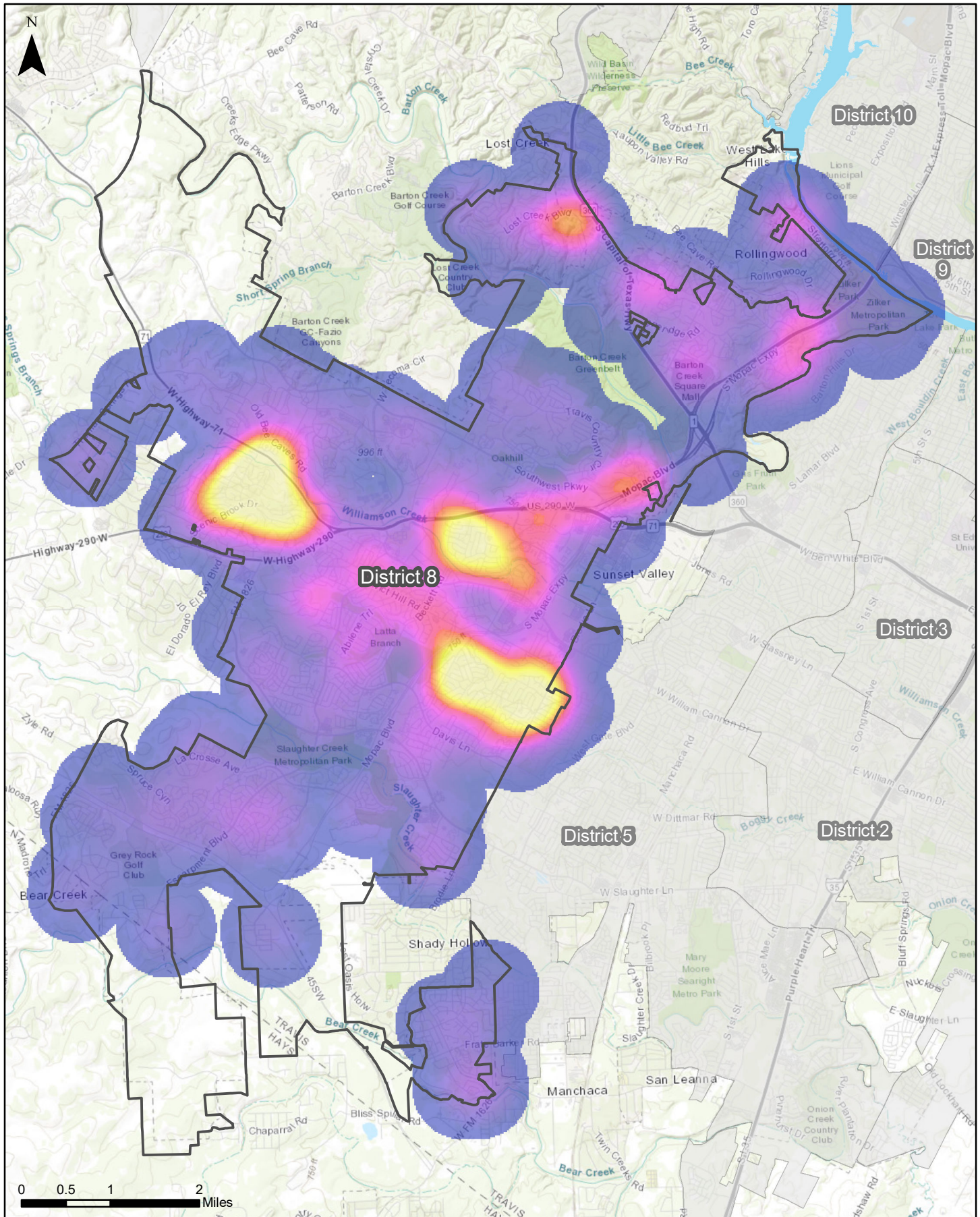
### Operating License Cases by Team



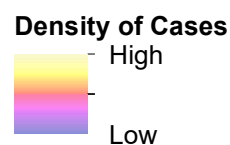
### Operating License Complaint Types



# Council District 8



This map examines the density of code cases opened in District 8 between October 1, 2017 and September 30, 2018.

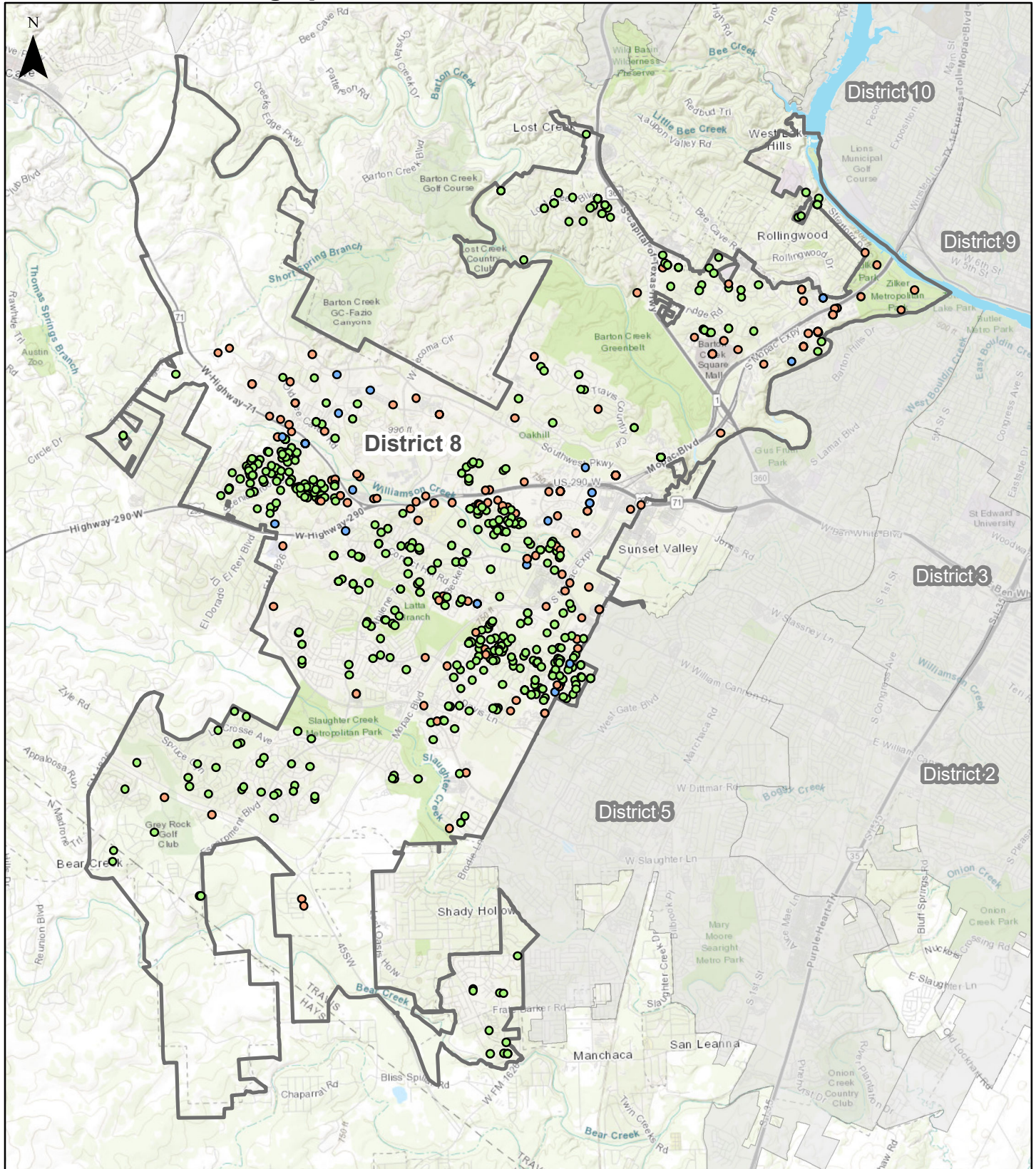


**AUSTIN**CODE  
DEPARTMENT

Map generated on:  
5/20/2019



## District 8 Case Demographics



This map examines case demographics within District 8 between October 1, 2017 and September 30, 2018.

### Case Demographics District 8

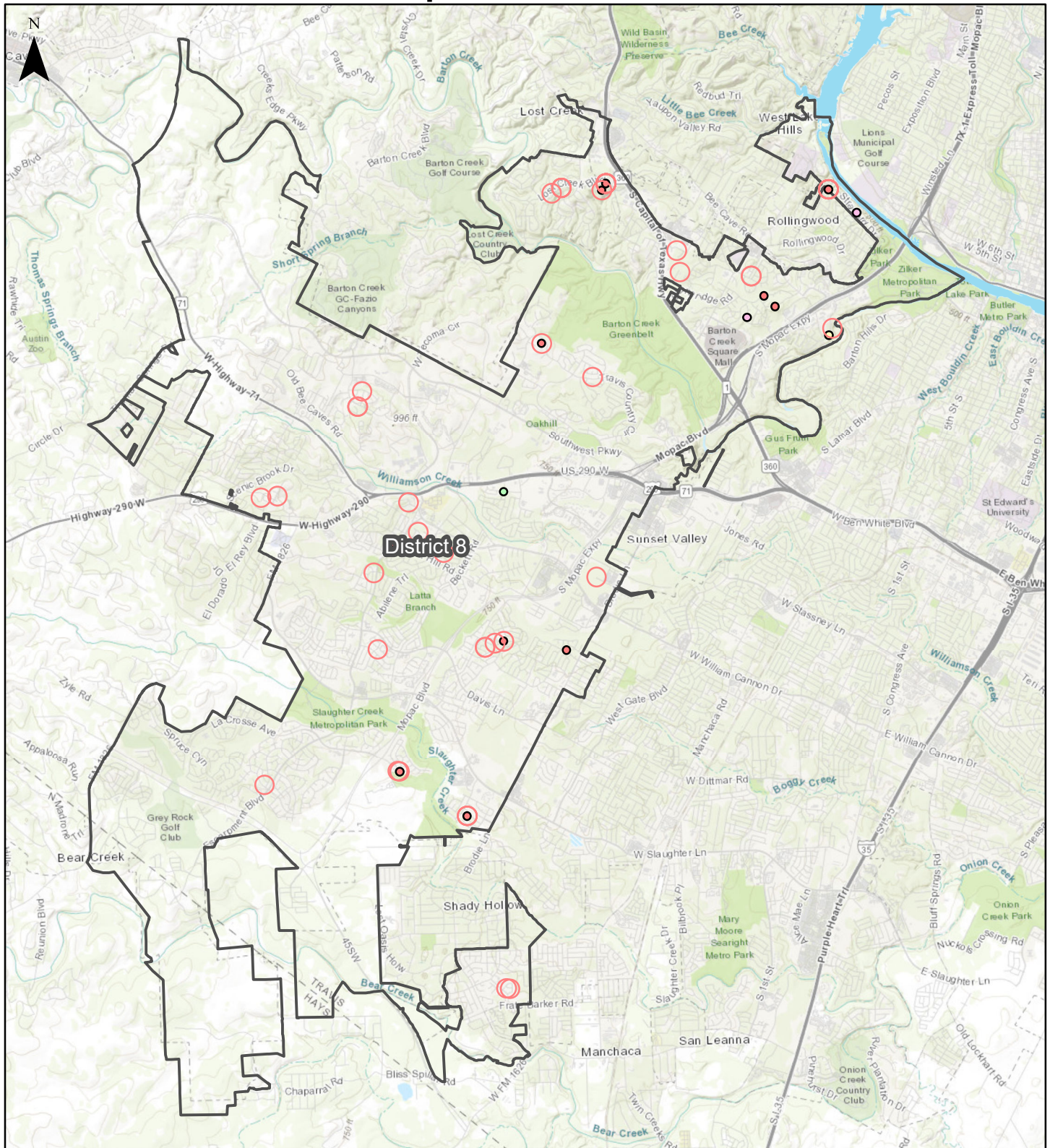
- Commercial
- Multifamily
- Neighborhood

**AUSTIN** **CODE**  
**DEPARTMENT**

Map generated on:  
6/10/2019



# District 8 Short Term Rental Complaints and Licenses



## STR Complaints Overlaid onto STR Active Licenses

- Short Term Rental Complaint Cases

## Short Term Rental Active Licenses

- Short Term Rental Type 1
- Short Term Rental Type 1-A
- Short Term Rental Type 1-Secondary
- Short Term Rental Type 2
- Short Term Rental Type 2 Commercial
- Short Term Rental Type 3

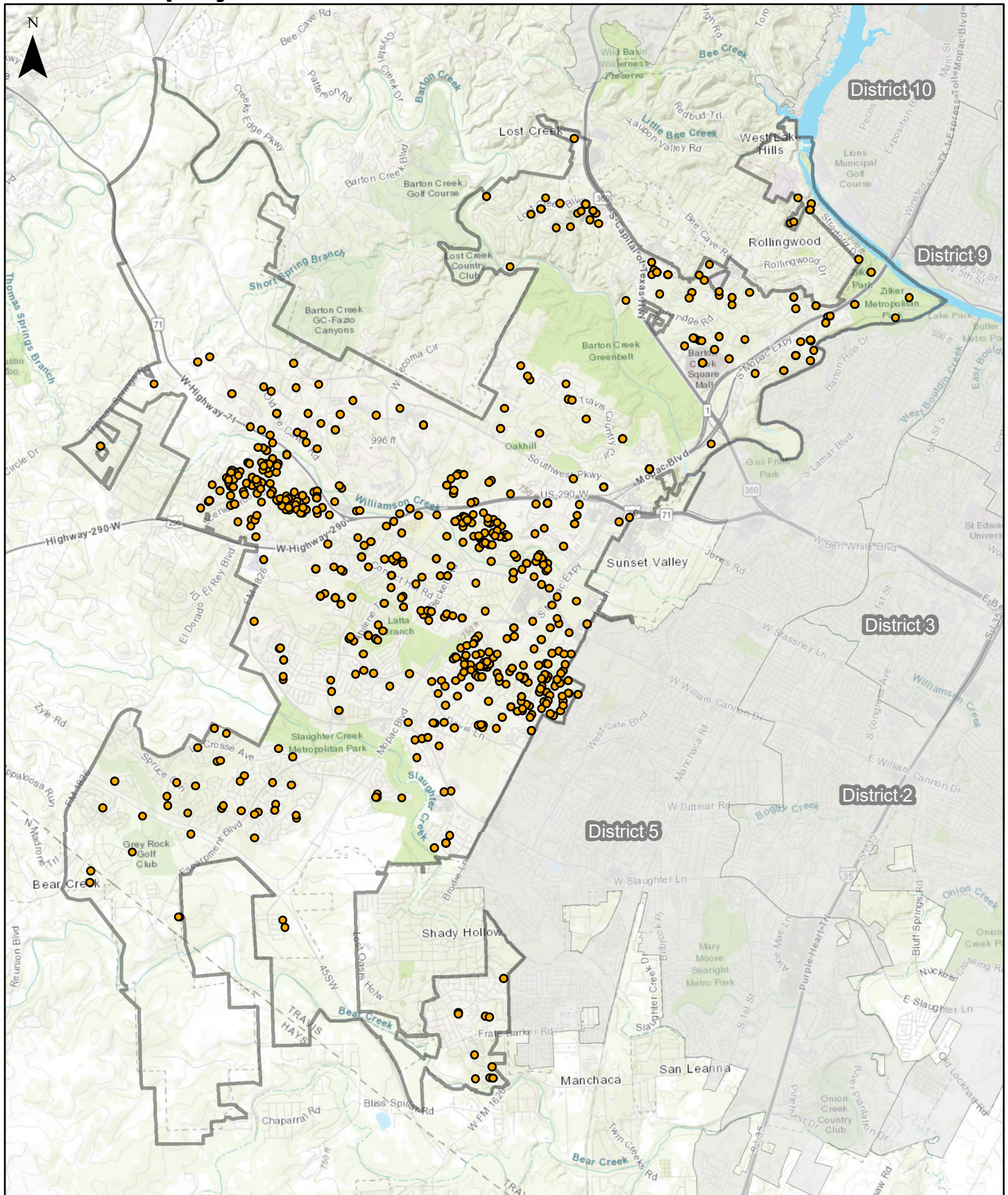
**AUSTIN CODE  
DEPARTMENT**

Map generated on:  
6/10/2019

This map overlays Short Term Rental Complaints over Short Term Rental Licenses in District 8 during October 1, 2017 and September 30, 2018.



## District 8 Property Abatement



0 0.5 1 2 Miles

● Property Abatement Cases

This map examines property abatement cases opened within District 8 between October 1, 2017 and September 30, 2018.

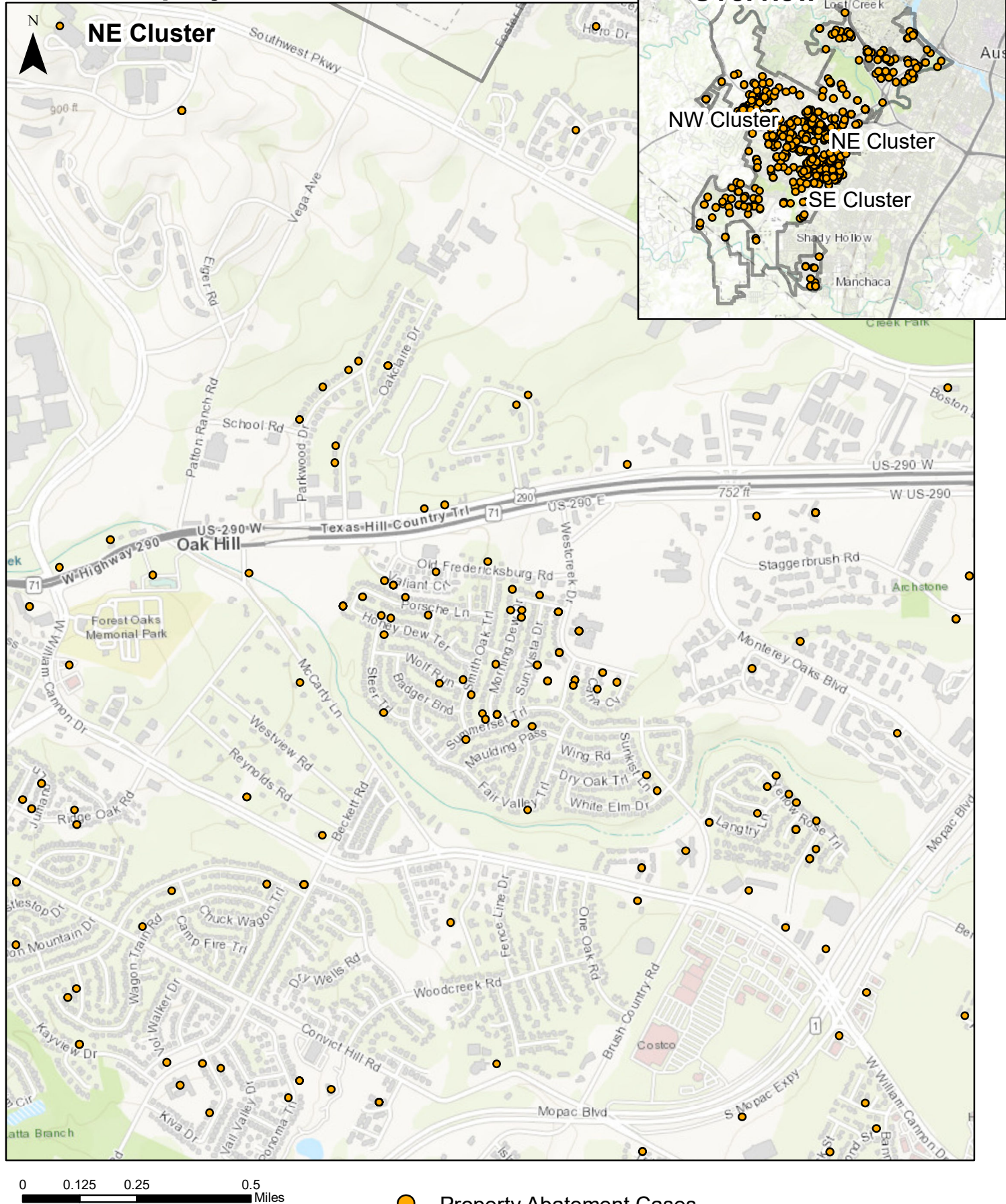
Sources: AMANDA Case Management Database; GIS DM 2019

**AUSTIN**CODE  
DEPARTMENT

Map generated on:  
6/10/2019



## District 8 Property Abatement



This map examines property abatement cases opened within District 8 between October 1, 2017 and September 30, 2018.

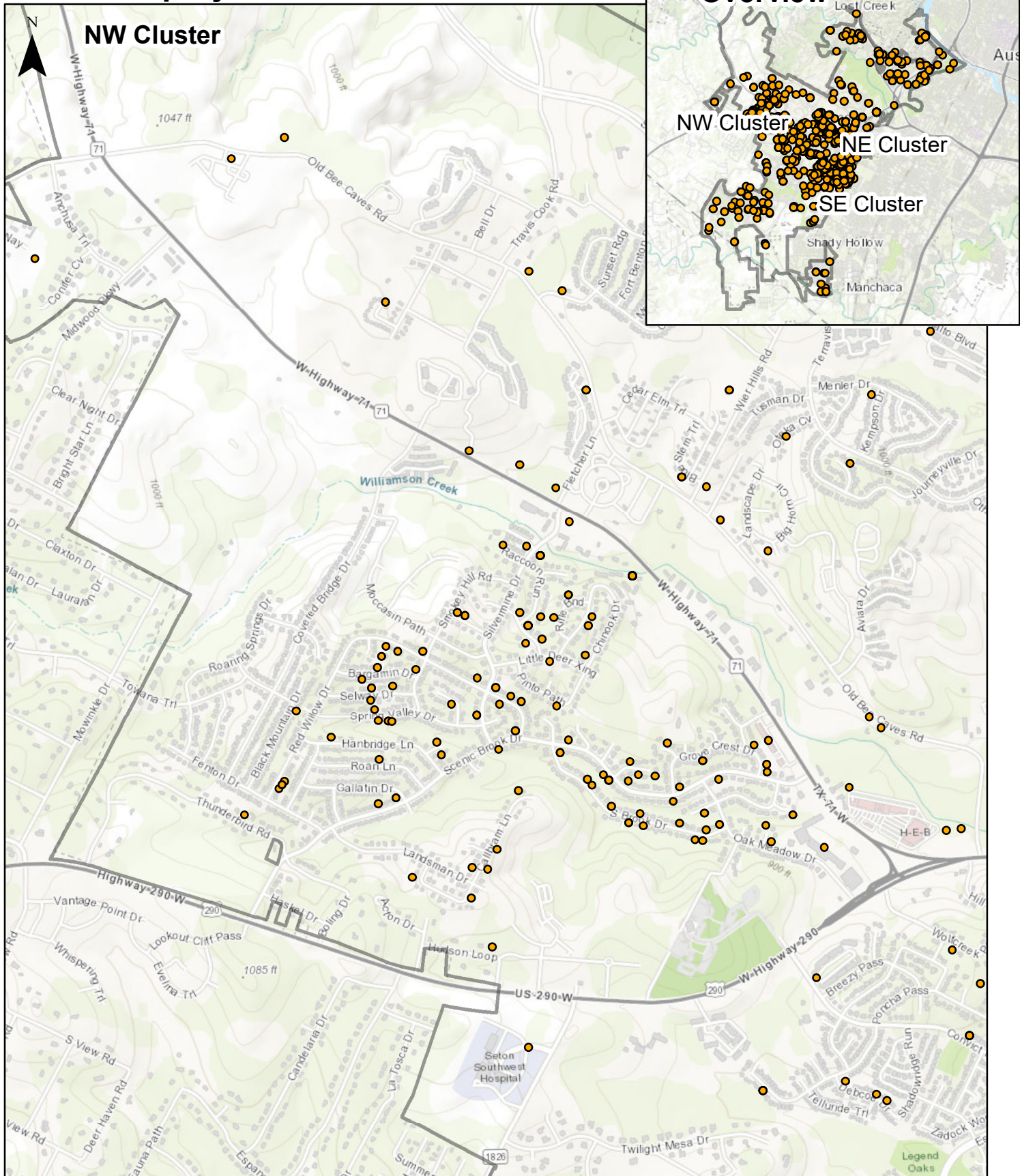
Sources: AMANDA Case Management Database; GIS DM 2019

**AUSTIN**CODE  
DEPARTMENT

Map generated on:  
6/10/2019



## District 8 Property Abatement



This map examines property abatement cases opened within District 8 between October 1, 2017 and September 30, 2018.

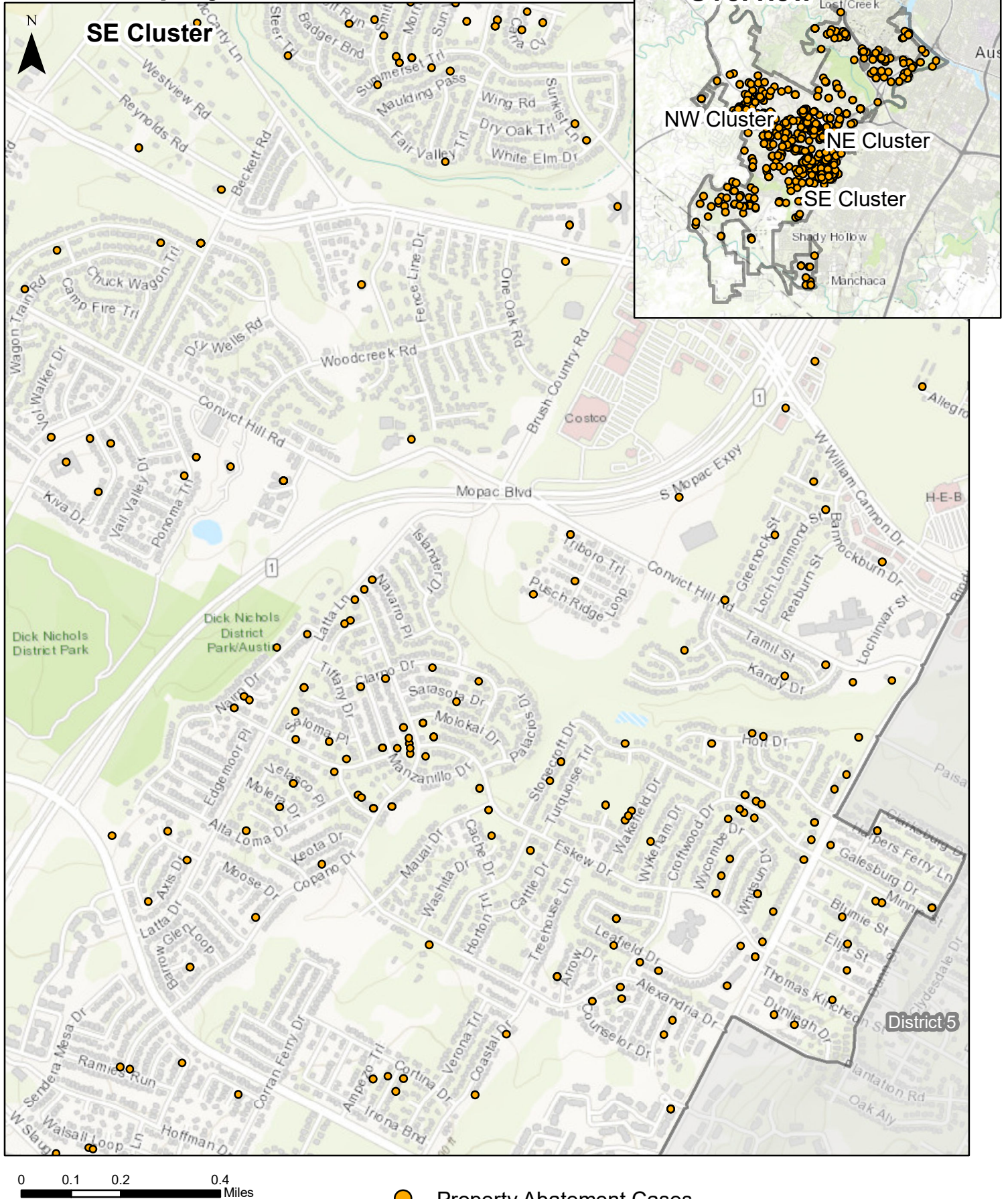
Sources: AMANDA Case Management Database; GIS DM 2019

**AUSTIN**CODE  
DEPARTMENT

Map generated on:  
6/10/2019



## District 8 Property Abatement



This map examines property abatement cases opened within District 8 between October 1, 2017 and September 30, 2018.

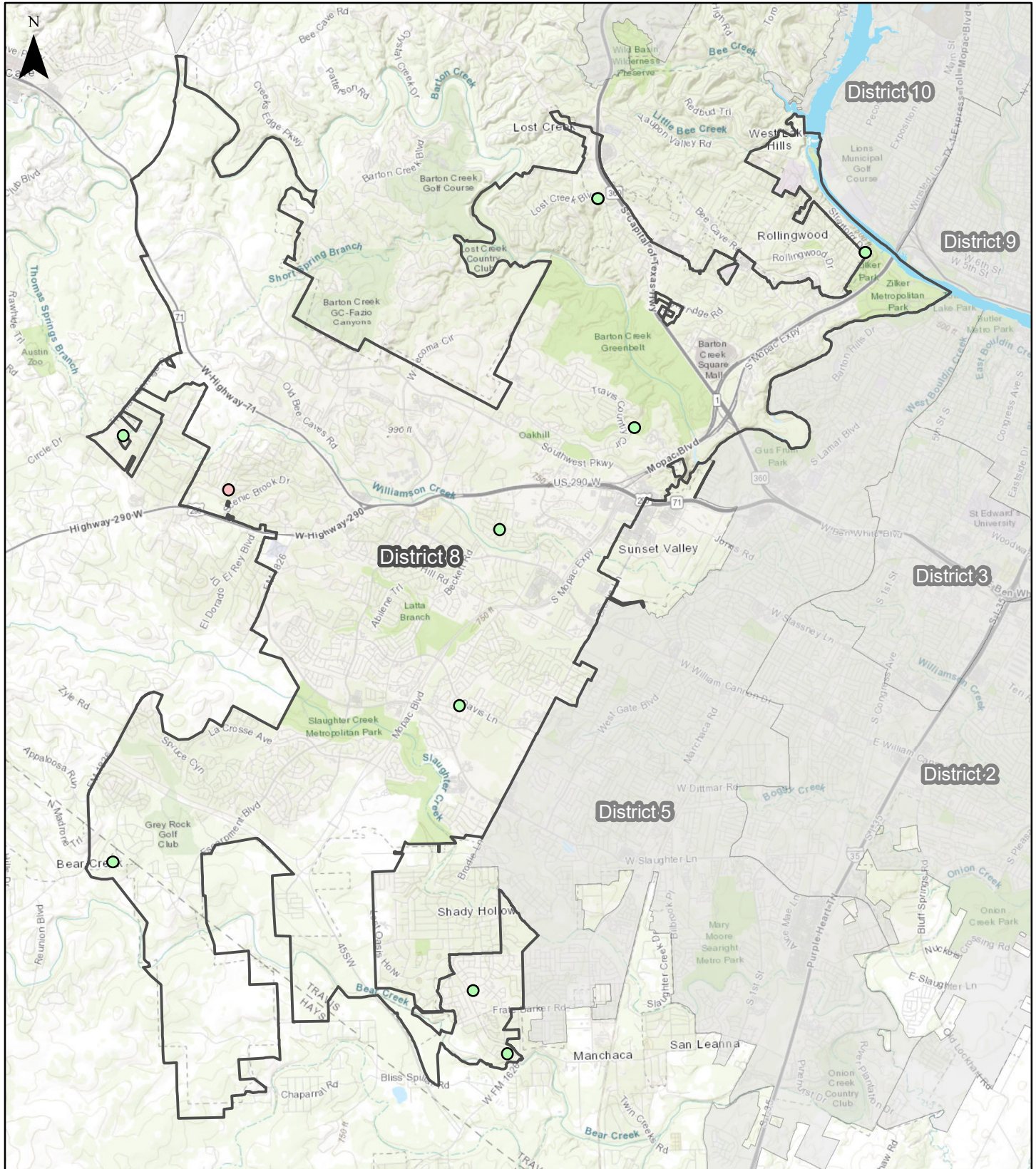
Sources: AMANDA Case Management Database; GIS DM 2019

**AUSTIN**CODE  
DEPARTMENT

Map generated on:  
6/10/2019



## District 8 Cases Escalated



0 0.5 1 2 Miles

This map examines cases within District 8 escalated to legal between October 1, 2017 and September 30, 2018.

## Cases Escalated

- AH Citation Process
- BSC Review

**AUSTIN**CODE  
DEPARTMENT

Map generated on:  
6/10/2019

